

# CONSERVATION is CREATION because it is an ACT OF CHOICE

Group members: Mario Barra; Carla Bartolomucci; Alexandru Calcatinge; Giulia Cherchi; Maria Antonietta De Vivo; Rita Gagliardi; Martina La Mela; Daniela Pittaluga; Sara Rocco; Barbara Scala; Raluca-Maria Trifa



European Association for  
Architectural Education  
Association Européenne pour  
l'Enseignement de l'Architecture



Università  
di Genova

DAD DIPARTIMENTO  
ARCHITETTURA E DESIGN



Scuola di  
Specializzazione in  
Beni Architettonici  
e del Paesaggio

# Our approach





# Continuity of uses?



Via del Canneto il lungo



Via di Prè



# Invasive new uses



Palazzo del Melograno



Palazzo Penco



# The memory of lost uses



Via di Prè



Chiesa di San Gerolamo e Francesco Saverio



# From mixité to new 'ghetto'



San Pietro in Banchi



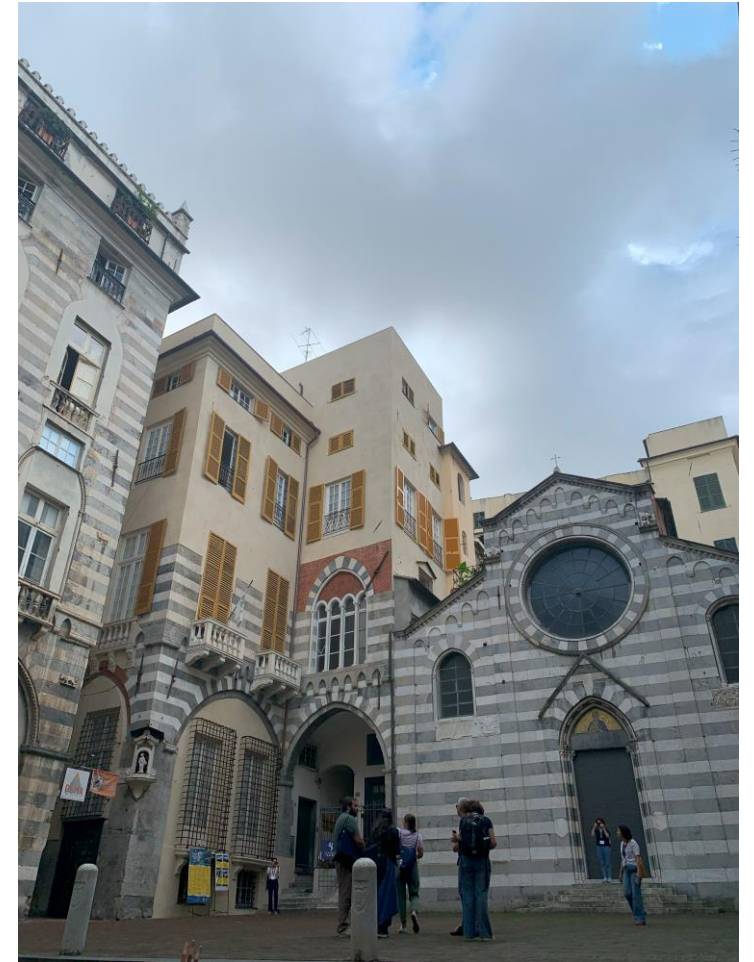
Via di Prè



# The public use of the private space



Piazza di San Matteo





# The private use of the public space



Narrow street in historic center



Piazza Fossatello



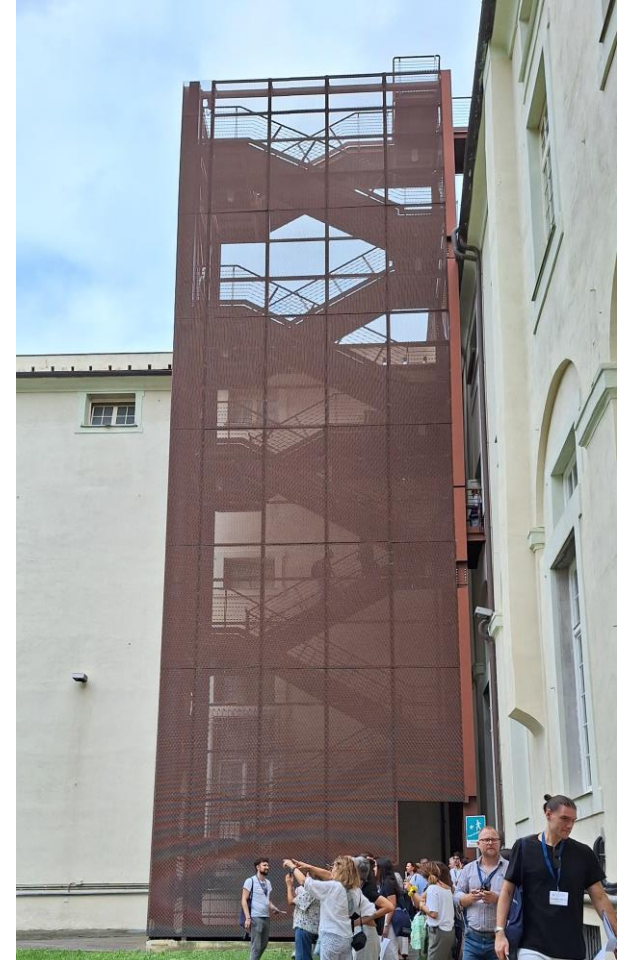
# Different answers of hybridity



Casa della giovane



Carlo Felice Theatre



Albergo dei poveri



# Distorted/invasive hybridity



Via delle Fontane



Piazza del Portello



Loggia dei Banchi



# Conservation as creation



Loggia dei Banchi

- Urban stratigraphy
- Rediscovering hidden meanings and adding new ones
- Narrative of tangible and intangible
- Project as the tool to connect and adapt
- Digital tools and new technology



# Conservation as creation: is this the answer?



Albergo dei Poveri



# Degrees of creativity: is this necessary?



Aula Magna – Albergo dei poveri



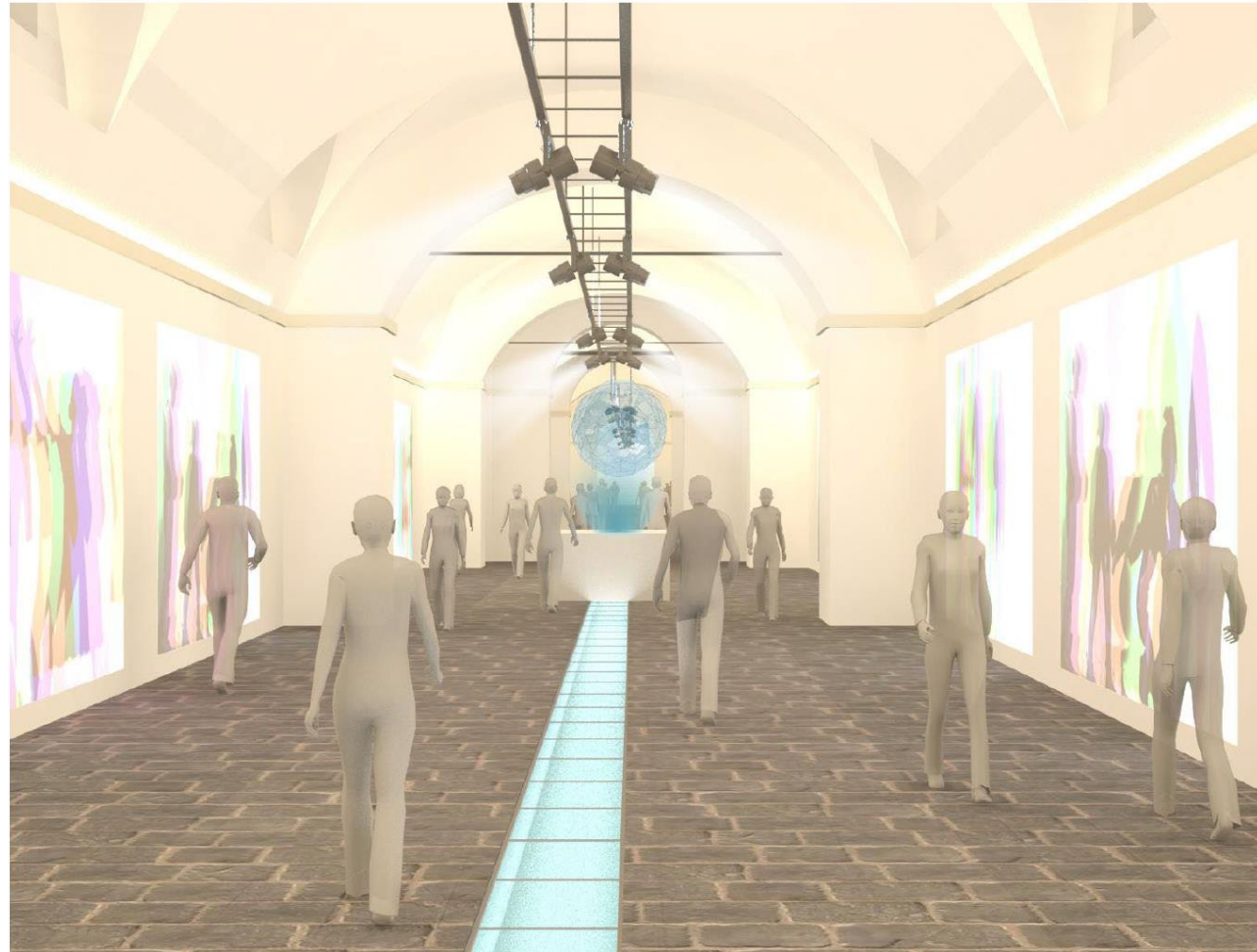
Biblioteca – Albergo dei poveri



# Preserving signs of use/overwriting historic memory



Strada centrale – Albergo dei poveri





# Uneffective attempted creativity



Via di Prè



Archivolto dei Fregoso



# The catalyst for change: bottom-up initiatives



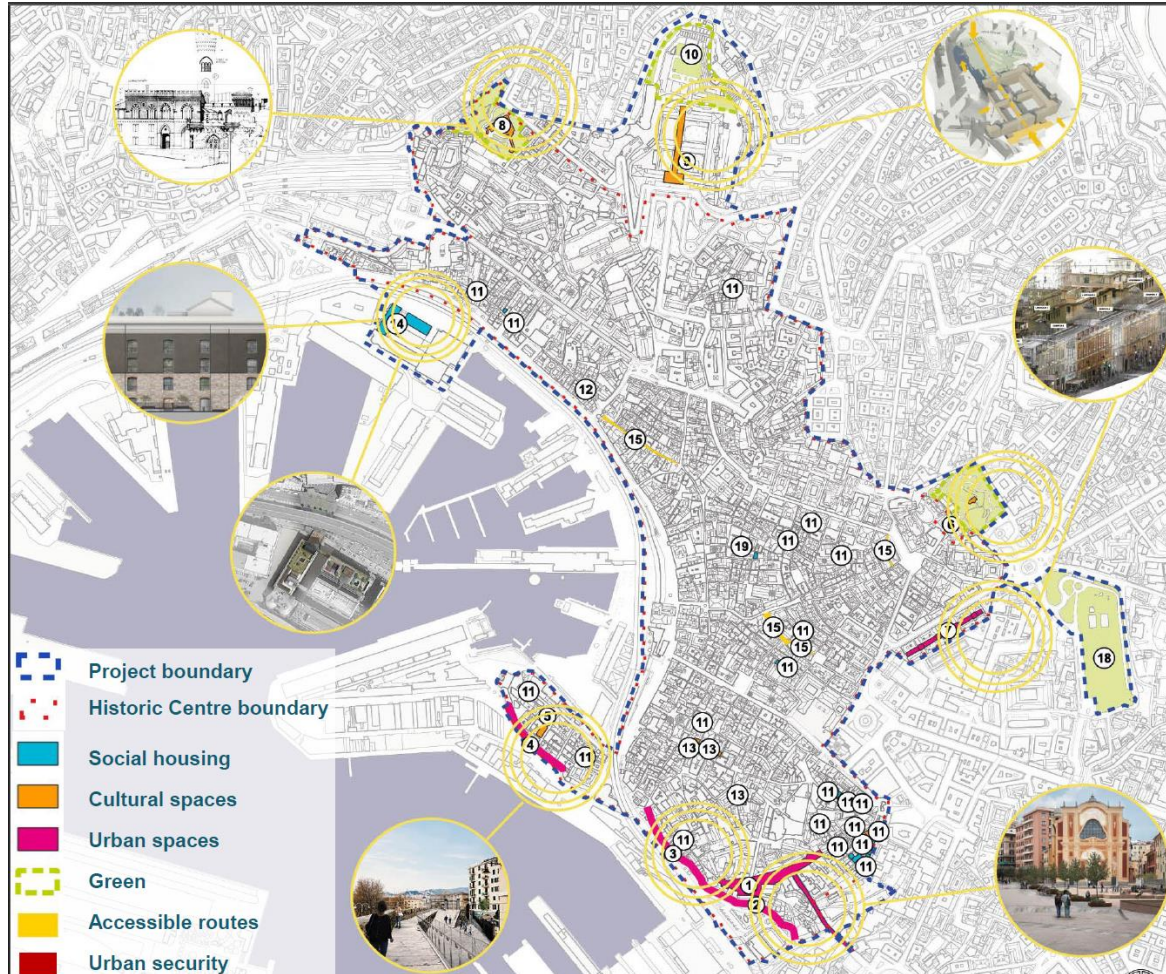
Don Gallo Square



Don Gallo Square during the night



# The catalyst for change? top-down initiatives



## PINQUA “PILOT” PROPOSAL

1. Piazza Sarzano
2. Mura della Marina
3. Mura delle Grazie
4. Mura della Malapaga
5. Massoero
6. Villetta Di Negro
7. Galleria Mazzini
8. Castello D'Albertis
9. Albergo dei Poveri: Strada Nuova
10. Albergo dei Poveri: Valletta Carbonara
11. Public and Social Housing (A.R.T.E.)
12. Via di Prè 12-14
13. Public spaces at street level
14. Tabarca – Metelino
15. PEBA (Plans for the Elimination of Architectural Barriers)
16. Vehicles portals control
17. Smart control cameras
18. Acquasola Park
19. “Condominio etico” (social housing)

PINQUA project



# Deep Purple







**European Association for  
Architectural Education**  
Association Européenne pour  
l'Enseignement de l'Architecture



**Università  
di Genova**

**DAD DIPARTIMENTO  
ARCHITETTURA E DESIGN**



**Scuola di  
Specializzazione in  
Beni Architettonici  
e del Paesaggio**